

Visit us

Our child-focussed, modern building features spacious care rooms and a creche.

By mid-2025, our on-site outdoor sensory playground and yarning circle will be complete.

This will be a special space to play, talk and yarn about any ups and downs you may be facing.

We welcome all people and have provided a fully accessible and inclusive space – regardless of ability or identity.

Free – no need for

- > referrals
- > appointment
- > diagnosis
- > Medicare card

Open 7 days

8am – 7pm Monday to Friday
9am – 3pm Saturdays and Sundays

THE KIDS hub

For small voices and big feelings



If you are unable to visit The Kids Hub please contact our Care Navigators – they can discuss options that best suit your child and family's circumstances.

Find us here



Walk-ins Welcome

The Stan & Jean Perron Child, Youth and Family Centre

1 Watertank Way, Midland WA

0405 349 227

kidshub@parkerville.org.au

kidshubwa.org.au

FEEDBACK

Your thoughts and suggestions help us continue to improve and provide the best support for children and families.

Please reach out to us at
kidshub@parkerville.org.au
with your comments and ideas.

Services are delivered
in partnership by



The Kids Hub is jointly funded by the Australian Government and the Western Australian Government.

WELCOME

The Kids Hub is a new free service dedicated to supporting babies and children aged 0-12 – within the City of Swan – who are experiencing mild to moderate developmental, behavioural, emotional or mental health challenges.

By addressing issues before they become more serious, we can provide children and families with tools to promote long-term well-being at home, school, and with social connections.

Our approach is carefully tailored to meet the unique needs of each child and includes support with issues such as behaviour, emotional regulation, social skills, self-esteem, and coping with bullying.

WHAT TO EXPECT

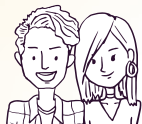
Our Care Navigators are the heart of The Kids Hub – your first point of contact.

They provide essential guidance and support by identifying how The Kids Hub can best support you.



Assessment

Welcome, assessment
& family journey map



Support

Support by on-site
health professionals



Referral

Referral to external
services, if required



Plan & Review

Family journey plan review
& exiting the service



HOW WE CAN HELP

The Kids Hub is well-equipped and there are lots of ways we can help:

- > Care navigation: to help you plan the best path forward
- > On site therapists and mental health professionals
- > Peer support: parents who have faced the same as you
- > Workshops for kids & carers
- > Use of therapeutic and educational tools
- > Access to a wide range of reading resources
- > Specialised local programs and creche

The Kids Hub does not offer crisis mental health services. For immediate help, families will be connected to appropriate services.

Our approach ensures that both your child and family receive the comprehensive care they need for long-term well-being.



kidshubwa.org.au

