

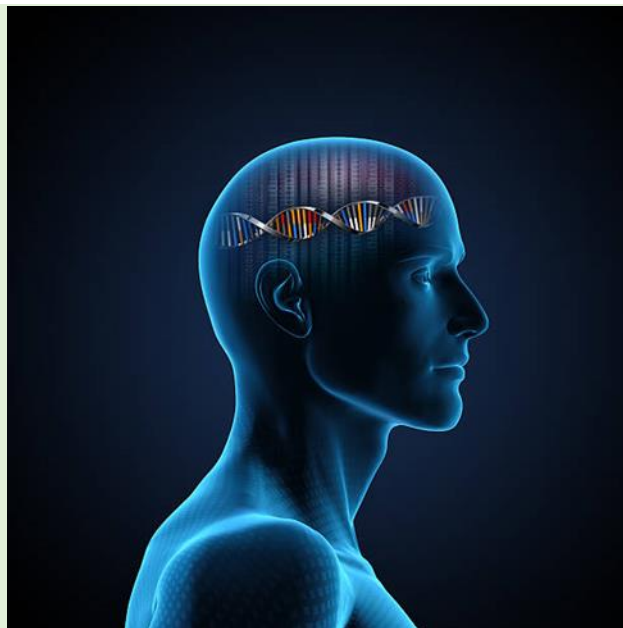
ALIGNED

Australian trial of GeNotype-guided
pharmacotherapy for Depression



Click the QR code to
visit study website

**Are you about to start on antidepressants OR
change your current antidepressants?
The ALIGNED study may help tailor antidepressant
treatment based on your genes.**



Who can take part?

The study may suit you if:

- You are 18 to 80 years old
- You live in Australia
- You have depression
- You are about to start on antidepressants (although you can have taken it in the past) OR considering changing your antidepressants
- You are willing to consider antidepressants.

For more information, visit www.alignedstudy.org.au